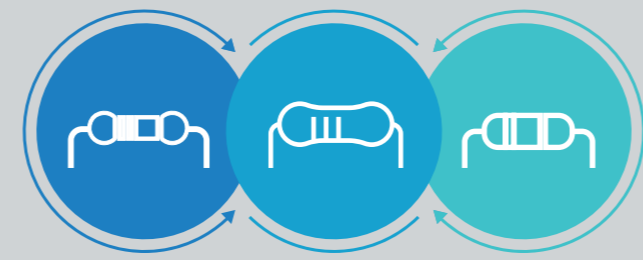
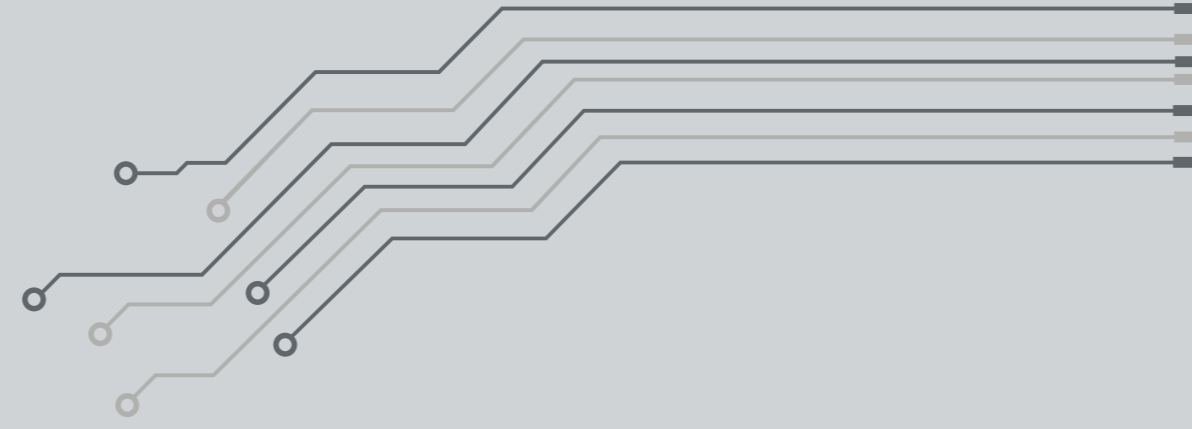
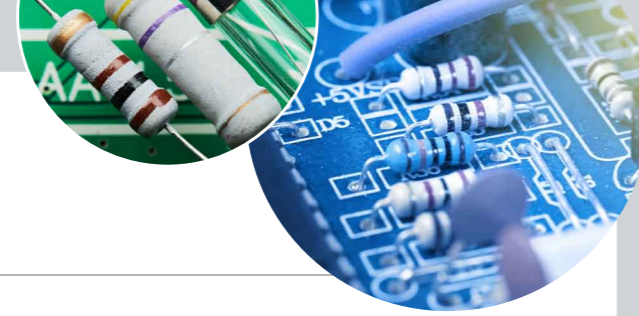
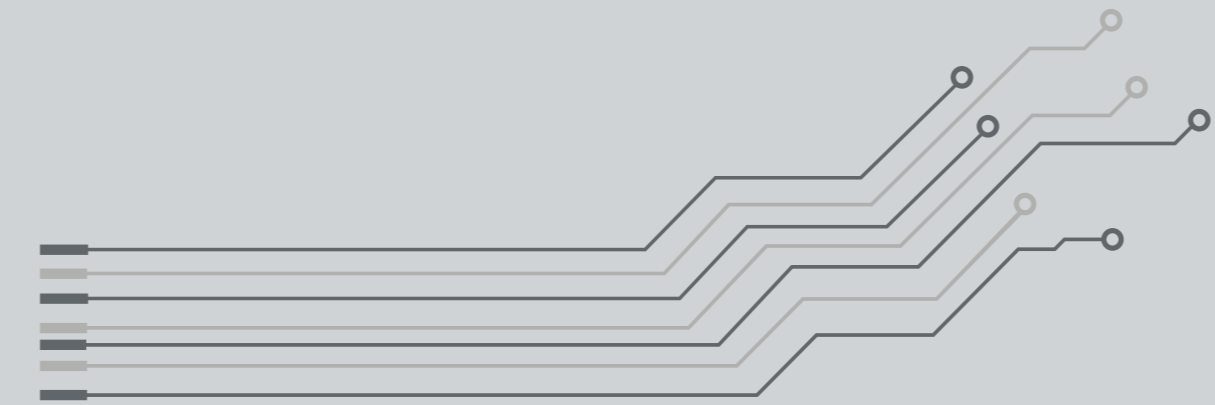


Product



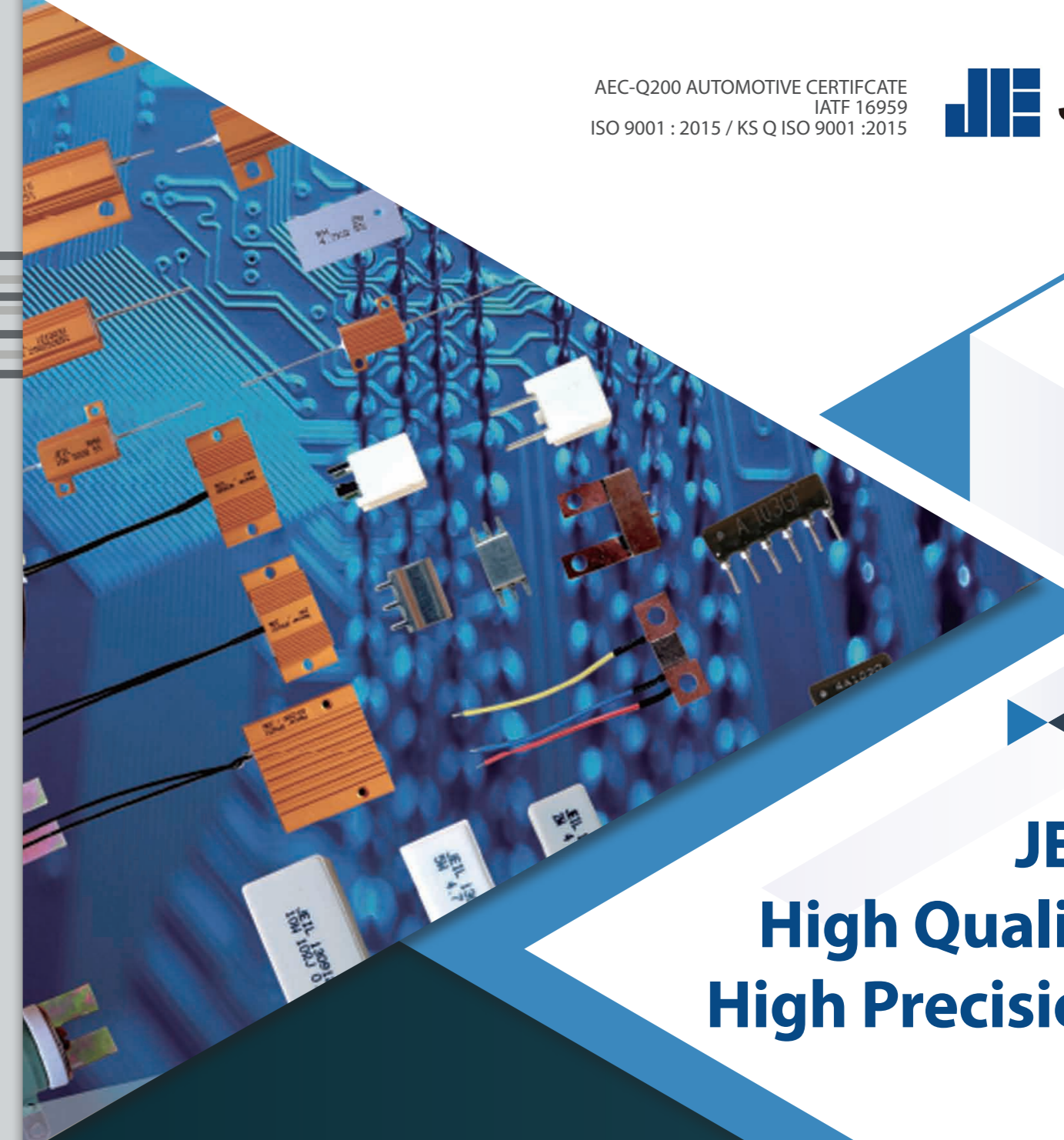
www.resistors.co.kr



JEIL ELECTRONICS CO., LTD.

126 Mugap-Gil Chowol Gwangju Kyunggi-Do
 Korea 12730
 Phone : 82-31-764-8216 Fax: 82-31-764-8347
 E-Mail: gbkim828@hotmail.com

AEC-Q200 AUTOMOTIVE CERTIFICATE
 IATF 16959
 ISO 9001 : 2015 / KS Q ISO 9001 :2015



JEIL High Quality High Precision

RESISTOR

- PRE-CHARGE
- METAL CLAD
- WIRE WOUND
- CEMENT
- HIGH VOLTAGE
- FUSIBLE
- HEATER
- CURRENT SENSING
- METAL OXIDE
- METAL FILM
- CARBON FILM
- CHASSIS MOUNT

Pre Charge Resistors For EV/HEV



Cement | RQL Type

Power rating	20W...100W
Resistance range	5Ω...200Ω
Tolerance	±1%...±10%
Dimensions	L x W x H 63x12.5x12...150x29x30mm

Metal clad | IRHB TYPE

Power rating	80W...200W
Resistance range	5Ω...200Ω
Tolerance	±1%...±10%
Dimensions	L x W x H 75x41x22...165x60x30mm



Metal clad | IRHB-S TYPE

Power rating	100W...500W
Resistance range	5Ω...200Ω
Tolerance	±1%...±10%
Dimensions	L x W x H 120x80x12...330x80x12mm

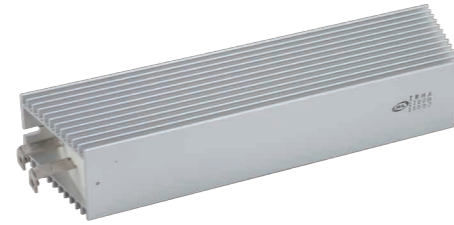


Metal clad | PRHW TYPE

Power rating	100W
Resistance range	5Ω...200Ω
Tolerance	±1%...±10%
Dimensions	L x W x H 75x41x22...165x60x30mm



Metal Clad Resistors



Metal clad | IRH Type

Power rating	600W...2.8KW
Resistance range	1Ω...3KΩ
Tolerance	±1%...±10%
Dimensions	L x W x H 215x45x85...550x60x85mm

Metal clad | RHB / IRHA Type

Power rating	50W...500W
Resistance range	0.1Ω...6.8KΩ
Tolerance	±1%...±10%
Dimensions	L x W x H 100x41x22...335x60x30mm



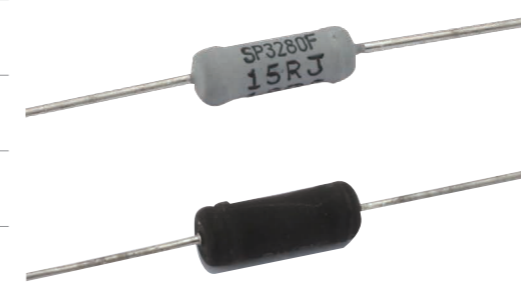
Metal clad | RHW Type

Power rating	5W...100W
Resistance range	0.1Ω...50KΩ
Tolerance	±1%...±10%
Dimensions	L x W x H 29x16x9...182x22x14mm

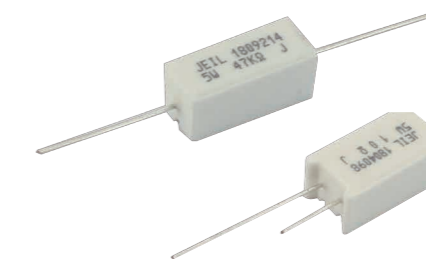


Wire Wound

Power rating	0.5W...10W
Resistance range	0.1Ω...100KΩ
Tolerance	±0.5%...±5
Dimensions	L x W x H 2x7...10x46mm



Cement



Power rating	2W...100W
Resistance range	0.1Ω...200KΩ
Tolerance	±1%...±5%
Dimensions	L x W x H 17.5x6.4x6.4...150x29x30mm

Fusible

Power rating	1/4W...3W
Resistance range	0.1Ω...10KΩ
Tolerance	±0.5%...±5
Dimensions	L x W x H 6.5x2.3...5.5x16mm



Heater



Power rating	5W...50W
Resistance range	0.1Ω...1kΩ
Tolerance	±5%...±25%

Current sensing

Power rating	5W...50W
Resistance range	5mΩ...500mΩ
Tolerance	±1%...±10%



Chassis Mount



Power rating	200W...600W
Resistance range	0.1Ω...100KΩ
Tolerance	±1%...±5%